

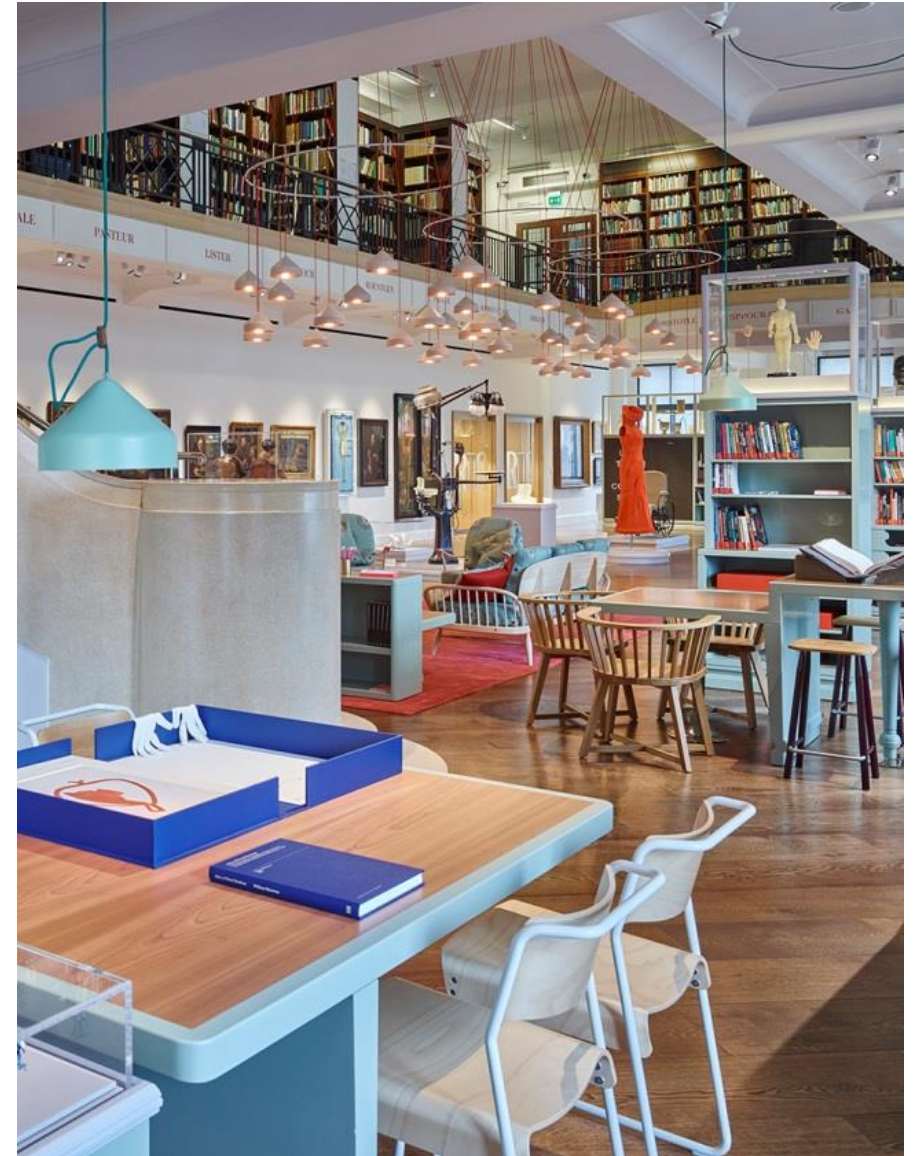


The Reading Room Remade

Simon Chaplin
(s.chaplin@wellcome.ac.uk)

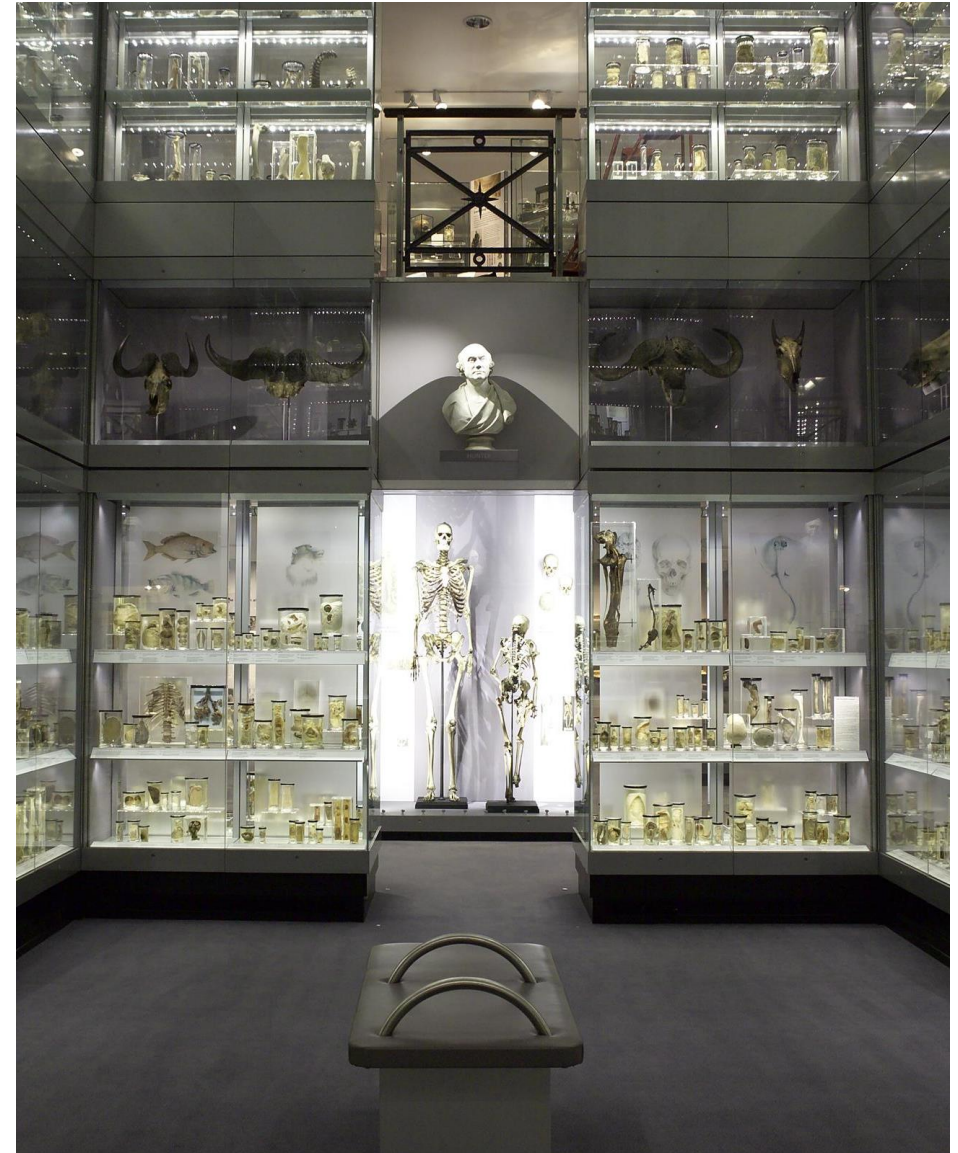
Summary

- My background
- Wellcome Trust
- Issues facing libraries in the UK
 - funder requirements
 - digitisation
 - audiences
- Case studies of innovative libraries
 - 'hybrid' research/public libraries
- Wellcome Collection/Wellcome Library
 - how we made a hybrid library
- Conclusion



My background

- Curator, Science Museum, London 1992-1998
- Senior Curator/Director of Museums, Royal College of Surgeons of England, 1998-2010
 - turned academic collection into public museum
- Head of the Wellcome Library, Wellcome Trust, 2010-2014
- Director of Culture & Society, Wellcome Trust, 2014- present
 - GBP120m p.a. for museum, library and grant funds for research, education and public engagement
- Board Member, Research Libraries UK, 2014-present



Wellcome Trust

- Independent global charitable foundation which seeks to improve health for everyone by helping great ideas to thrive
- Founded by Sir Henry Wellcome in 1936
- Self-financing, with an endowment of GBP20bn and annual budget of c.GBP1bn
- Supports biological and clinical science, translational research, humanities and social science, education, arts and culture.
- Runs **Wellcome Collection**, a museum and library which challenges the way people think and feel about health by connecting science, medicine, life and art.




Issues facing libraries

- Funder requirements
 - **public libraries** – funding cuts, need to appeal to wider community.
 - **university libraries** – student fees and the national student survey give students a voice.
 - **independent/museum research libraries** - need to redefine role.
- Digitisation:
 - available for free (Google Books, Internet Archive)
 - licensed material is expensive/restricted (Elsevier)
- What does this mean for audiences?
 - does academic/public distinction still apply?



Search worldwide, life-sciences literature

 Search

[Advanced Search](#)

E.g. "breast cancer" HER2 Smith J



Search more than abstracts

- **Abstracts** (31.7 million, including 26.6 million from PubMed)
- **Full text articles** (3.9 million)
- **Patents** (4.2 million)
- **Agricola records** (631,827)
- **NHS clinical guidelines** (782)

[About Europe PMC](#) 



Link to public databases

Explore protein, gene, species and disease records **directly from articles**:

- UniProt
- Protein Data Bank (PDB)
- European Nucleotide Archive (ENA)
- Wikipedia and other lay summaries


[Learn how we use text-mining](#) 




Get credit for your work

ORCID is a unique identifier for researchers which distinguishes you from every other researcher, and makes it easier to find your work.

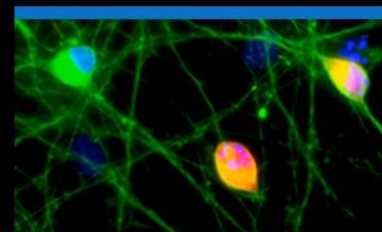
Use our claiming tool to link your Europe PMC articles to your ORCID

[Link articles to your ORCID](#) 

 Feedback



A new twist in the Hippo-YAP pathway

[Read more](#)


RESEARCH ARTICLE

Regulating stress signaling in neurons

SHORT REPORT

Engineering CRISPR-Cas9 for enhanced gene editing

THE ELIFE PODCAST: LATEST EPISODE

From brain waves to gender bias

INSIGHT

Endosymbiotic algae: Gasping for air

FEATURE ARTICLE

Living science: The humanity of science

WEBINAR REPORT

Communicating your research: Engaging with wider audiences

Latest research

UPCOMING

APR

MAY

ARCHIVE

La-related protein 1 (LARP1) binds the mRNA cap, blocking eIF4F assembly on TOP mRNAs

La-related protein 1 specifically and directly binds the 5' cap and first nucleotide of mRNAs encoding ribosomal proteins and

Subjects

> Biochemistry

> Biophysics and Structural Biology



Wellcome Open Research

A new way for Wellcome-funded researchers to rapidly publish any results they think are worth sharing.

[SUBMIT YOUR RESEARCH](#)

[Browse Articles →](#)

Powered by
F1000

05 MAY 2017

A CRISPR/Cas9-based method and primer design tool for seamless genome editin...

26 APRIL 2017

Functional assessment of the NMDA receptor variant GluN2AR586K

26 APRIL 2017

David Stafford-Clark (1916-1999): Seeing through a celebrity psychiatrist

Are you



<http://wellcomelibrary.org/readingroom>

Collections

Reading Room



ABOUT THE COLLECTIONS

ARCHIVES AND MANUSCRIPTS GUIDES

DIGITAL COLLECTIONS

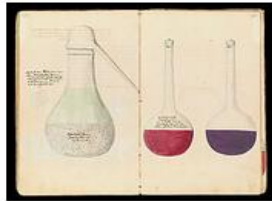
- » AIDS posters
- » Arabic manuscripts
- » Art in the Library
- » Codebreakers: Makers of Modern Genetics
- » Film and sound
- » London's Pulse: Medical Officer of Health Reports, 1848-1972
- » Mental healthcare
- » Reading Room**
- » Recipe books
- » The Royal Army Medical Corps
- » Sexology
- » John Thomson photographs
- » UK Medical Heritage Library

BROWSE DIGITISED CONTENT

SUBJECT GUIDES

The **Reading Room** – Wellcome Collection's hybrid gallery, library and event space – features hundreds of items from the Library's collections. Here you can explore and download a selection of paintings, prints, manuscripts and more.

[Find out more about the Reading Room](#)

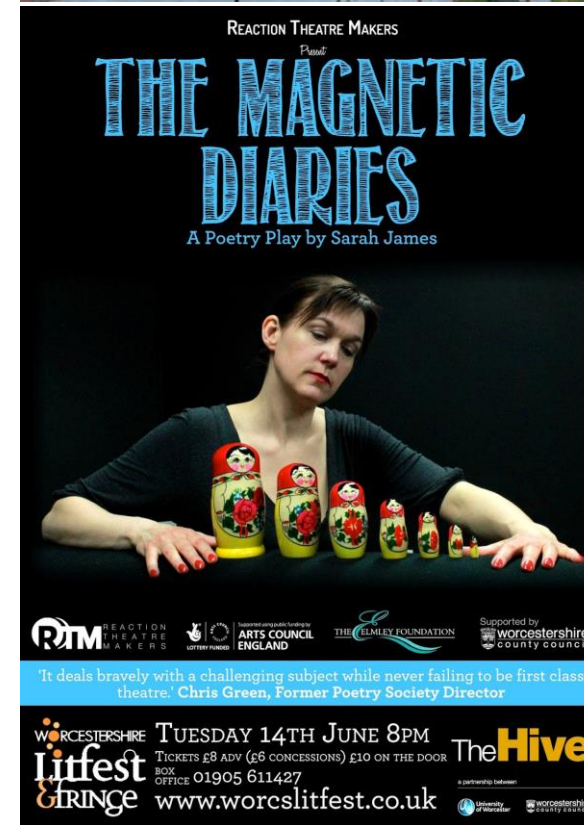


Case studies: new audiences

- The Hive, Worcester – a combined university and public library
- Heritage Quay, Huddersfield – a university archive with a public face
- The Keep, Brighton – an archive centre for local government, a local museum and a university
- The Dana Research Centre and Library, Science Museum – a new museum library
- Tate Archives and Library – a museum archive with a public face
- Wellcome Collection – a combined public museum and research library

The Hive, Worcester

- <http://www.thehiveworcester.org/>
- Opened 2012
- Europe's first combined public and university library (joint between University of Worcester and City of Worcester)
- 1,000,000 visitors per year – from university students to adult learners, families to small businesses
- 250,000 books
- 20km of archives
- 10,000 m² of floor space
- academic and public events – arts, literature, music



Heritage Quay, Huddersfield

- <http://heritagequay.org/>
- Opened 2014, funded by UK Heritage Lottery Fund
- 630 m2, 7000 visitors per year
- 500,000 items including sound and film archives
- Based on University of Huddersfield archives but strong emphasis on local communities and public as well as researchers
- Very innovative public events – e.g. music recording – and exhibition/display space (230 m2)



The Keep, Brighton

- <http://www.thekeep.info/>
- Joint archive centre for East Sussex Records Office, Royal Pavilion & Museums for Brighton City Council and University of Sussex
- Opened 2013
- 800m2 of public space, 18km of archives storage
- Areas for individual and group study and research
- Some public events
- Compromised by location – away from other cultural and academic centres



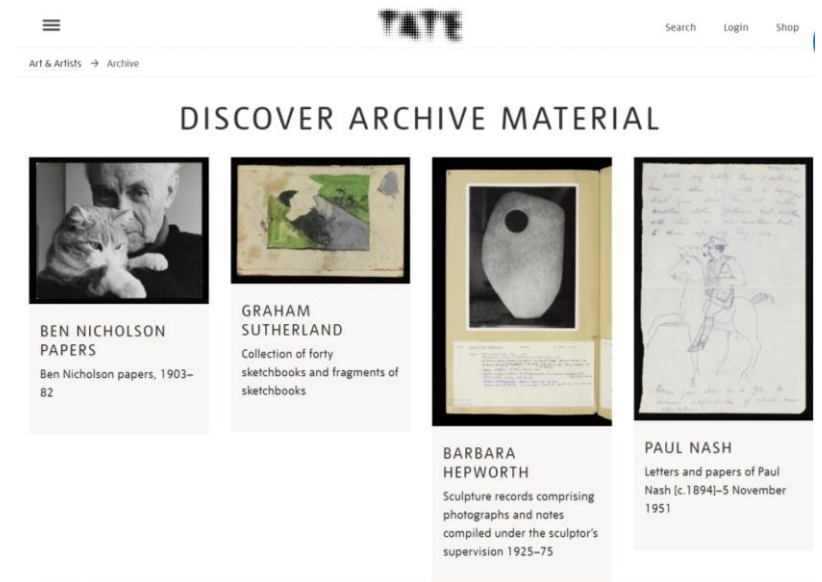
Dana Research Centre, Science Museum, London

- <http://www.sciencemuseum.org.uk/about-us/collections-and-research/activities-and-projects/dana-centre>
- Opened 2016
- London base for Science Museum library and archives which are stored in Swindon (125km away)
- 18 reader desks
- Need to order material in advance
- Disconnected from main public spaces (5.5m visits per year)



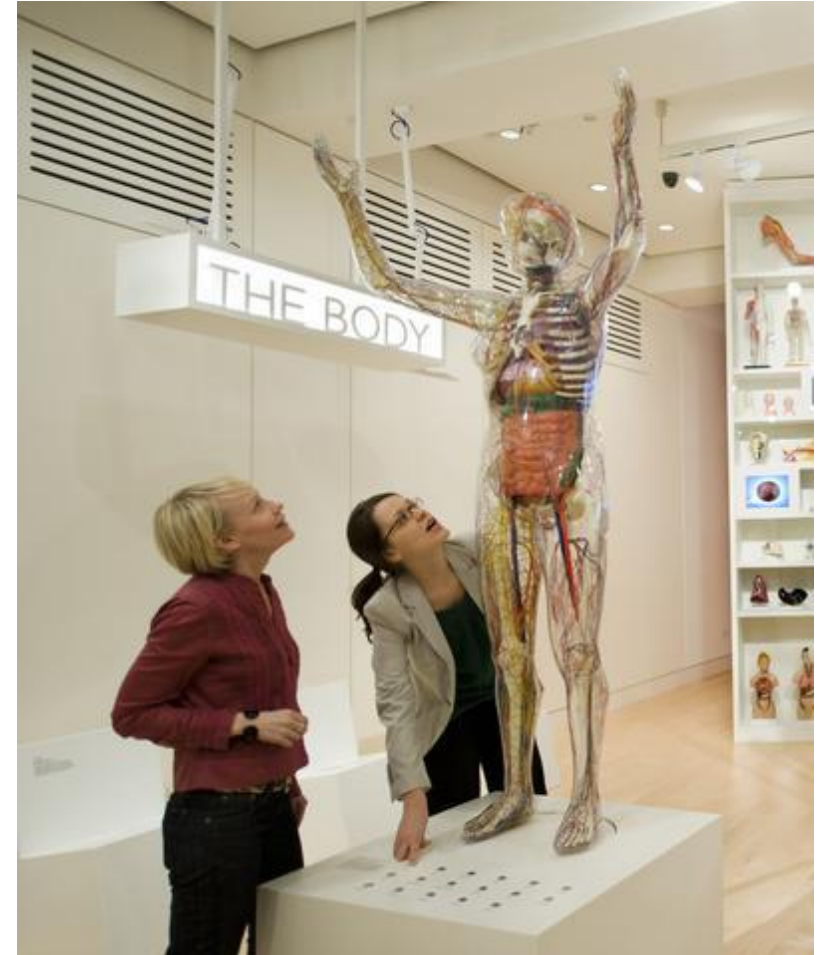
Tate Archives, London

- <http://www.tate.org.uk/research>
- 'Archives and Access' project finished in 2015
- Funded by UK Heritage Lottery Fund
- 6 new display and study spaces
- linked to digitisation project
- extended outreach project across UK



Wellcome Collection, London

- <http://wellcomecollection.org>,
<http://wellcomelibrary.org>
- Medical history library and museum founded in 1930s
- Wellcome Collection founded in 2007 – ‘free destination for the incurably curious’, blending medicine, life, art
- 100,000 visits in 2007, 500,000 visits in 2013
- 40,000 visits to library
- 2010-2013: Library Transformation Programme
- 2013-2015: Wellcome Collection Development project



Wellcome Library



Wellcome Library Transformation



targeted collecting

strategic digitisation

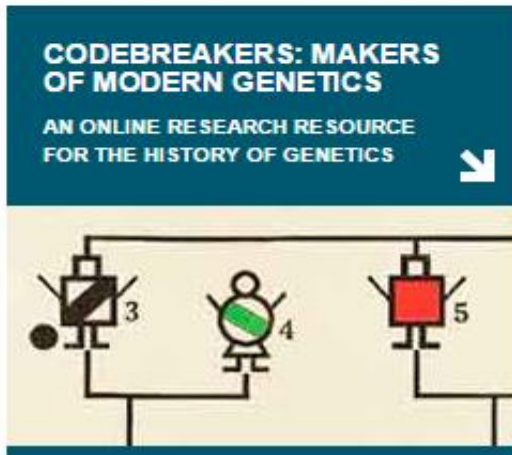
expert interpretation

3

Targeted Collecting



Strategic digitisation



The screenshot shows the MHL website with a dark green header featuring the 'MHL' logo and 'Medical Heritage Library' text. A search bar is in the top right. Below the header is a navigation menu with links: About, News, Browse, Search, Participate, Related Resources, Develop@MHL, and Contact Us. The main content area has a large image of a botanical illustration from Nicholas Culpeper's 'The Complete Herbal'. To the right of the image is a text box titled 'Images from the Library' with a 'View full post' button. Below this is a section titled 'As Requested by AAHM15!' with a byline 'by Hanna Clutterbuck | May 1, 2015'. The text describes the MHL as a digital curation collaborative. Below the text are links for 'Search the MHL', 'Full Text MHL Search', 'MHLbookworm', and 'Catalog only'. At the bottom, there is a link to 'Browse the MHL' and a 'Via list of American Medical Journals' link. On the right side of the website, there is a 'MHL Full Text Search (Beta)' section with a search bar and a 'Search' button. Below that is a 'Medical Heritage Twitter' section with a tweet from @bschillace and a retweet from @HASTAC. At the bottom right is a 'Recent Additions to the Collection' section.

Expert interpretation





Charles Townley and
his friends in his library
at Park St,
Westminster.
Johann Zoffany, c.1790







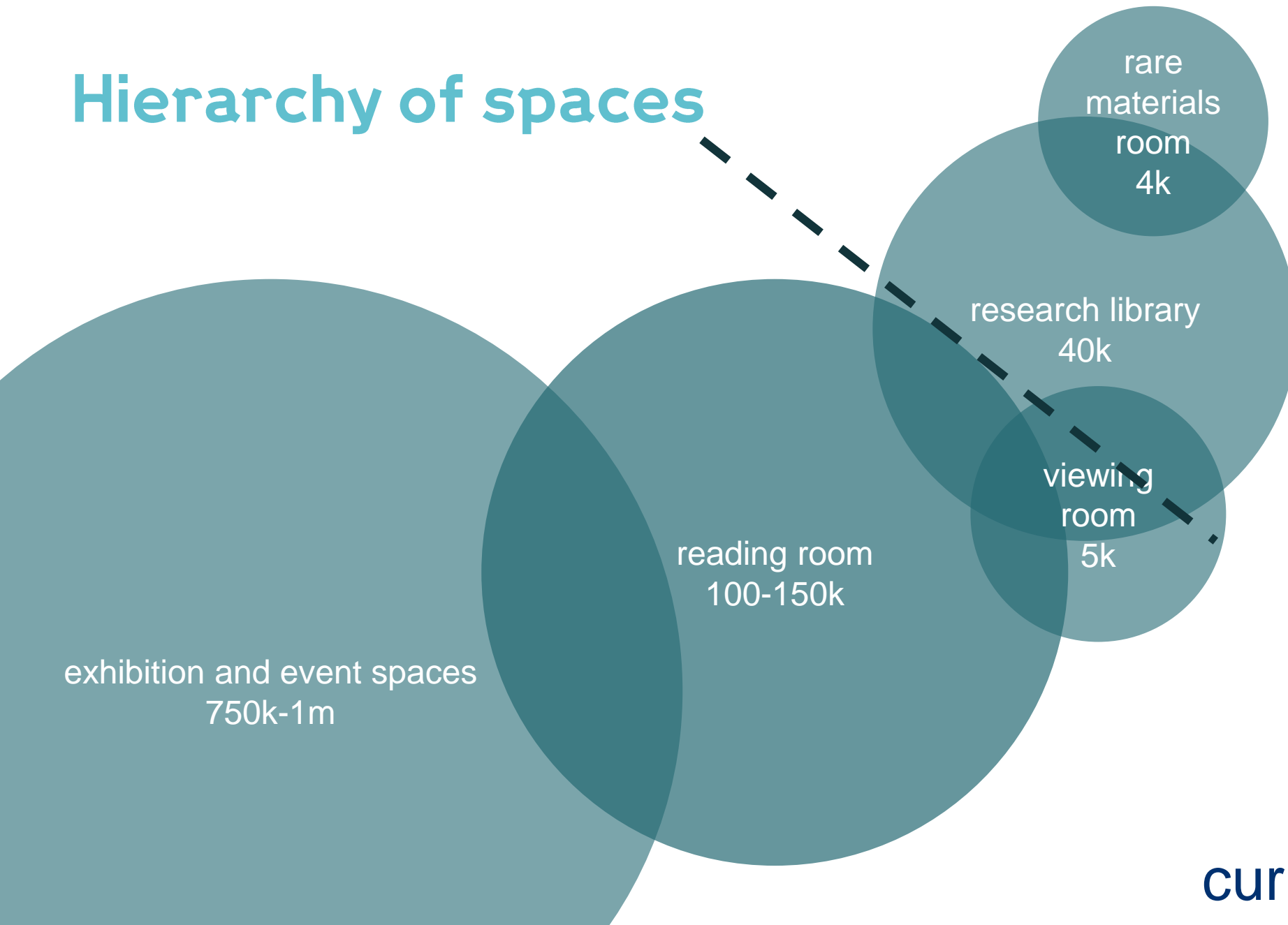








Hierarchy of spaces



curious public

researcher





Internet Archive

The Hub/Science Media Centre

Conservation/Photographic

Research Library

Reading Room/Research Library/
Wellcome Kitchen

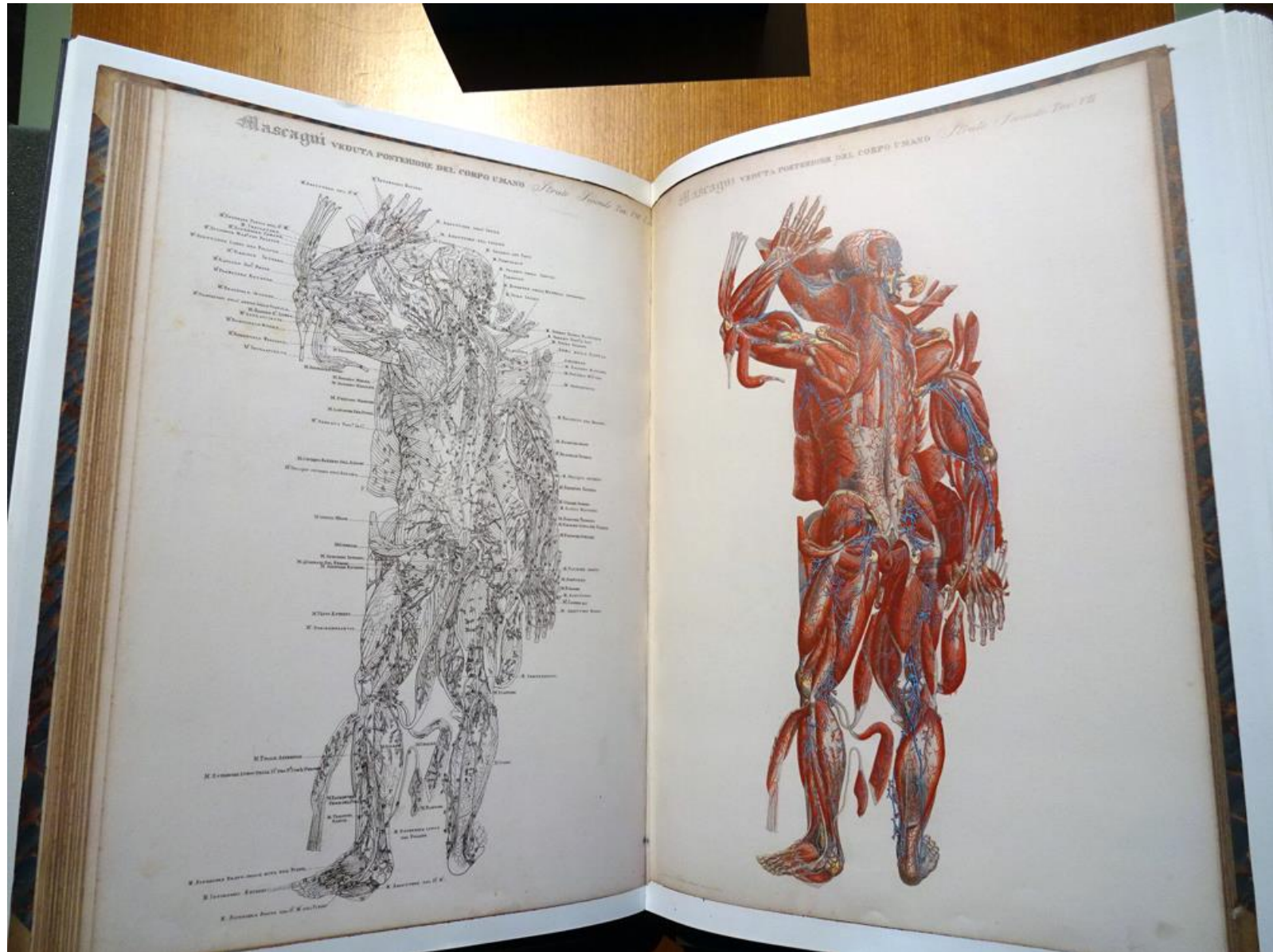
Medicine Man/Medicine Now/
Gallery 2/Studio/Forum

Gallery 1/Café/Shop

Event spaces









wellcome collection



TURN THE PAGE

Click on the bottom right corner of the publication or use the arrow buttons on the tool bar for instant page display.



ZOOM

To zoom in and out, click on the publication or use the zoom button, selecting a zoom level on the tool bar. Click and drag the page to navigate around whilst zoomed in.

For further information on using the tool bar and the additional functions of your Digital Publication, click the arrow below.

Next >

Reading Room Companion

.....
C O N S I S T I N G o f
a rare and valuable
COLLECTION of
diverse C U R I O S I T I E S

..... *acquired by and for*

Henry Wellcome 

with A GREAT VARIETY OF BOOKS



Jane Pitt
@PittJAne

 Follow

Can you see sound? Drop-in 2-3pm Fri
Wellcome Collection Reading Room. Listen,
draw, describe & map the hush & hum of its
unique soundscape



RETWEETS
2

LIKES
3



5:15 AM - 12 Oct 2016



sambtw
Wellcome Collection

Follow

16 likes

2w

sambtw Sleepy time in the Reading Room at the Wellcome Collection. I love a library that encourages naps and throws caution to the wind with cushions on the stairs.

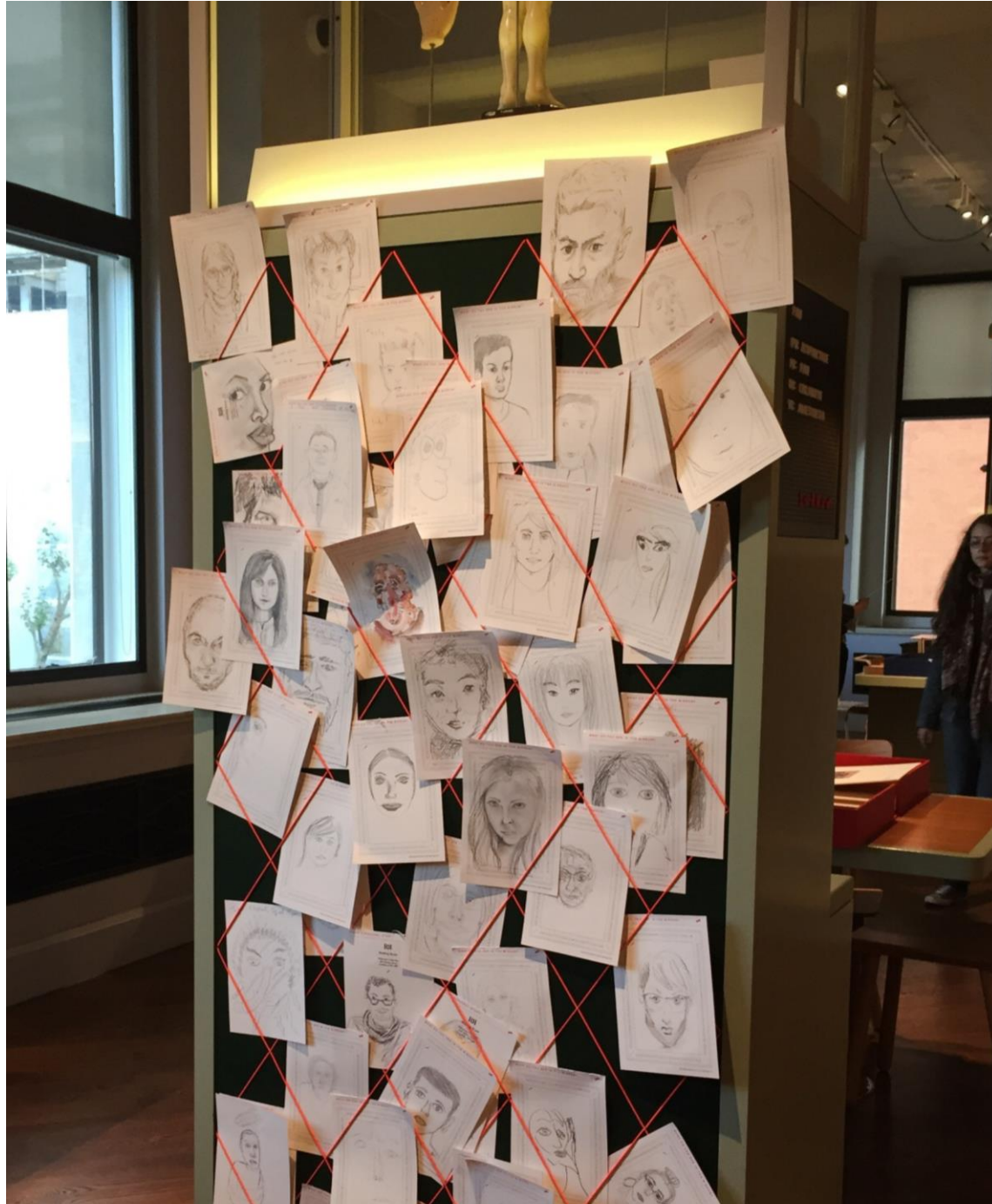
Log in to like or comment.













WetheHums/ Hanna

@WetheHumanities

Follow

The [@ExploreWellcome](#) (Wellcome Museum) Reading Room completely blew my mind. Made me re-evaluate my definition of what museums should be for



RETWEETS

4

LIKES

15



1:01 PM - 2 Nov 2016



The future?

The future

